

ORGANISATION
STATEMENT SHOWING THE LIST OF OFFICERS INCLUDING
DEPUTATIONS TO OTHER OFFICES.

Sl.No	Designation	Nos.
1.	Principal Chief Conservator of Forests and HoFF	1
2.	Principal Chief Conservator of Forests and Chief Wildlife Warden	1
3.	Spl. Prl. Chief Conservator of Forests	4
4.	Adll.Prl. Chief Conservator of Forests.	52
5.	Chief Conservator of Forests.	28
6.	Conservator of Forests.	24
7.	Dy. Conservator of Forests (I.F.S. Cadre)	30
8.	Dy. Conservator of Forests (State Cadre)	31
9.	Assistant Conservator of Forests.	160
10.	Non-Executive Officers {CAO/AO/GA(T),GA(Non-T)}	21
11.	Range Officers	426
12.	Dy. Range Officers	391
13.	Foresters	1298
14.	Forest Beat Officers	2916
15.	Assistant Beat Officers	1458
16.	Ministerial and Others	3031

Sl. No.	Organization	Territorial	Functional	Total
1.	Circles	12	14	26
2.	Divisions	44	61	105
3.	Ranges	204	222	426
4.	Sections	930	759	1689
5.	Beats	2611	305	2916

* As on 02-01-2012.

*Source: 1. PCCF Office – M Section.

2. PCCF Office – A Section.

REGION WISE FOREST AREA

Sl. No.	Name of the Region	Geographical Area (Sq. Kms)	Forest Area (Sq. Kms)	% of Forest Area Region wise	% of Forest Area to Geographical area
1.	Andhra (Coastal)	92,906	19,563.25	30.66	21.06
2.	Rayalaseema	67,299	15,008.40	23.52	22.30
3.	Telangana	1,14,863	29,242.08	45.82	25.46
Total :		2,75,068	63,813.73	100.00	23.20

*Source: Facts and Figures - 2009

FOREST COVER – DISTRICT WISE

Sl. No	Region	Nos.	Area in Sq.Kms.
1.	No. of Districts having forest cover more than 33%	2	13,196
2.	No. of Districts having forest cover between 19 to 33%	4	13,506
3.	No. of Districts having forest cover between 0 to 19%	17	37,112
Total:		23	63,814

*Source: SFR- 2009

ANDHRA PRADESH AT A GLANCE

Sl. No.	Economic Background	Unit	Total
1	Geographical Area	Sq.Kms	275068
2	Forest Area	Sq.Kms	63814
3	Forest Area to Geographical Area	%	23.20
4	Per Capita Forest Area	Ha.	0.0754
5	Population (2011 Census)	Lakhs	846.66
	<i>Male Population 2011 Census</i>	Lakhs	<i>425.10</i>
	<i>Female Population 2011 Census</i>	Lakhs	<i>421.56</i>
	Sex Ratio	For Thousand Male	992
6	Growth of Population of 2001-2011	%	11.1
7	Rural – Population (2001 Census)	Lakhs	554.01
8	Urban Population (2001 Census)	Lakhs	208.09
9	Density of Population as per 2011 Census	Per Sq.Km	308
10	Inhabited villages (2001 Census)	No.	26613
11	Towns	No.	210
12	Districts	No.	23
13	Revenue Divisions	No.	81
14	Mandal Praja Parishads	No.	1076
15	Revenue Mandals	No.	1128
16	Gram Panchayats	No.	21895
17	Literacy (2011 – Census)	%	67.66
	<i>Male Literacy as per 2011 Census</i>	%	<i>75.56</i>
	<i>Female Literacy as per 2011 Census</i>	%	<i>59.74</i>
18	Scheduled Castes (2001 – Census)	Lakhs	123.39
19	Scheduled Tribes (2001 – Census)	Lakhs	50.24
20	Length of Sea-Coast	Kms	965
21	Live-Stock-Without dogs (2007-Census)	No	60200863
22	Live Stock–Cattle, Buffaloes (2007-Census)	No	24494758
23	Sheep & Goats (2007-Census)	No	35165464
24	Miscellaneous-Pigs & other livestock (2007-Census)	No	540641
25	Poultry (2007-Census)	No	123984716
26	State Revenue for 2011-12 (B.E.)	Rs. In Crores	100995.27
27	Forest Revenue for 2010-11	Rs. In Lakhs	12873.90
28	Forest Expenditure for 2010-11	Rs. In Lakhs	27727.93

*Source: Statistical Abstract of A.P

FOREST AREA AND POPULATION OF DISTRICTS

Sl. No.	District	Geographical Area (Sq. Km)	Forest Block (No.)	Forest Area (Sq. Km)	Population (in lakhs) 2001 Census	% of Forest Area to the Total Geo. Area
1.	Adilabad	16,128	235	7,231.89	24.88	44.8
2.	Nizamabad	7,956	189	1,812.15	23.46	22.8
3.	Medak	9,699	233	905.94	26.70	9.3
4.	Rangareddy	7,493	127	730.75	35.75	9.8
5.	Hyderabad	217	-	0	38.30	-
6.	Mahabubnagar	18,432	86	3,032.51	35.14	16.5
7.	Nalgonda	14,240	26	836.93	32.48	5.9
8.	Karimnagar	11,823	201	2,544.83	34.92	21.5
9.	Warangal	12,846	112	3,710.14	32.46	28.9
10.	Khammam	16,029	356	8,436.94	25.79	52.6
11.	Srikakulam	5,837	79	686.41	25.38	11.8
12.	Vizianagaram	6,539	103	1,193.03	22.49	18.2
13.	Visakhapatnam	11,161	188	4,411.66	38.32	39.5
14.	East Godavari	10,807	161	3,232.44	49.01	29.9
15.	West Godavari	7,742	50	811.66	38.04	10.5
16.	Krishna	8,727	60	664.28	41.88	7.6
17.	Guntur	11,391	118	1,619.41	44.65	14.2
18.	Prakasham	17,626	130	4,424.99	30.59	25.1
19.	Nellore	13,076	268	2,519.37	26.69	19.3
20.	Kurnool	17,658	103	3,515.49	35.29	19.9
21.	Kadapa	15,359	154	5,002.95	26.02	32.6
22.	Anantapur	19,130	103	1,969.78	36.40	10.3
23.	Chittoor	15,152	184	4,520.18	37.46	29.8
ANDHRA PRADESH TOTAL		2,75,068	3,266	63,813.73	762.10	23.2

*Source: Facts and Figures - 2009

CLASSIFICATION OF FOREST AREA

Sl. No.	Region	Forest Area (Sq.Kms)	Percentage
1.	Legal Status		
	Reserved	50,479	79.10
	Protected	12,365	19.38
	Un-Classed	970	1.52
	Total	63,814	100.00
2.	Composition (Non-Coniferous Broad-Leaved)		
	Red Sanders	4,840	7.59
	Teak	9,145	14.33
	Others	49,829	78.08
	Total	63,814	100.00
3.	Forest – Types		
	a) Southern Tropical thorn	16,110	25.24
	b) Southern Tropical Moist deciduous	16,100	25.23
	c) Tropical dry deciduous	28,431	44.55
	d) Litoral	2,856	4.48
	e) Mangrove	317	0.50
	Total	63,814	100.00

*Source: PISFR

FOREST AND TREE COVER

Item	Unit	2005	2007
Forest Cover of the State	Sq.Kms	44372	45102
Tree Cover out side Reserved Forests	Sq.Kms	7640	7191
Total Forest & Tree cover of the State	Sq.Kms	52012	52293
Of State's Geographical Area	Percentage	18.91	19.01
Forest Cover of the Country	Sq.Kms	677088	690899
Tree Cover of the Country	Sq.Kms	91663	92769
Total Forest & Tree Cover of Country	Sq.Kms	768751	783668
A. P. Percentage of Country's Forest & Tree Cover	Percentage	6.77	6.67

*Source: SFR-2005 & 2009.

TREE COVER OUTSIDE THE NOTIFIED FOREST AREA

Culturable Non-Forest Area (CNFA)	Sq.Kms.	91663
No. of trees per ha. of CNFA	Nos	12.14
Tree Cover outside Reserved Forest of State	Sq.Kms.	7640
Percentage of State Geographical Area	Percentage	2.78
Percentage of CNFA	Percentage	8.33

*Source: SFR-2008 of AP (GIS) & SFR 2005

THE DISTRIBUTION OF GROWING STOCK IN DIFFERENT CANOPY COVER CLASSES

Sl.No.	Canopy cover class	Area in Sq. Kms.	Total growing stock in million M3	Growing stock per Ha in cubic meter
1	Dense (>0.4)	28,309	168.66	59.58
2	Open (0.1 – 0.4)	19,498	56.89	29.18
3	Scrub (<0.1)	4,898	6.53	13.34
Total		52,705	232.08	

*Source: Andhra Pradesh forest inventory report-2010

CIRCLE WISE FOREST COVER CHANGES

Sl. No.	Circle	Area in Sq. Kms							
		Very Dense Forest	Moderately Dense Forest	Open Forest	Scrub Forest	Non-Forest	Water Bodies	Total	Encroachment
1	Adilabad	501.31	3831.41	1350.01	760.10	622.27	36.21	7101.30	5.51
2	Ananthapur	0.03	198.59	1311.66	1356.84	1165.78	2.87	4035.77	0.46
3	FDPT Srisailam	7.79	1088.99	2540.02	2170.94	795.24	173.99	6776.97	0.37
4	Guntur	22.10	938.20	2000.13	2060.73	970.76	73.52	6065.44	1.26
5	Hyderabad	0.00	139.84	544.28	937.79	193.17	5.27	1820.35	1.01
6	Khammam	133.48	2340.39	2937.84	1767.18	736.86	29.60	7945.35	18.19
7	Kurnool	44.32	1186.88	2088.53	1219.25	1004.08	17.59	5560.65	1.58
8	Nizamabad	0.00	750.41	1319.19	449.45	200.45	12.02	2731.51	5.59
9	Rajahmundry	203.04	2869.38	666.12	451.11	220.18	243.11	4652.94	5.45
10	Visakhapatnam	34.89	2388.15	2648.37	844.11	644.40	12.46	6572.38	4.54
11	Warangal	0.00	2639.79	2468.66	564.20	673.29	38.83	6384.76	11.85
12	WLM-Tirupathi	3.18	257.06	2709.18	922.33	270.04	5.77	4167.57	0.93
Total		950.14	18629.09	22583.99	13504.03	7496.52	651.24	63814.99	56.74

Source: APSFR-2011

CIRCLE WISE GROWING STOCK IN ANDHRA PRADESH

Sl. No.	Circle	Dense Total Volume	Open Total Volume	Scrub Total Volume	Total Volume	Circle Average (Per Ha)
(in Million Cu M)						
						(in Cu M)
1	Adilabad	25.08	7.62	0.44	33.14	46.67
2	Ananthapur	2.19	1.59	0.47	4.25	10.53
3	Guntur	7.80	2.12	0.25	10.17	16.79
4	Hyderabad	0.51	0.63	0.28	1.42	7.80
5	Khammam	29.22	12.95	0.41	42.59	53.60
6	Kurnool	8.00	2.25	0.47	10.72	19.27
7	Nizamabad	3.06	4.46	0.24	7.76	28.39
8	Rajahmundry	23.90	2.33	0.20	26.42	56.79
9	Srisailam	11.11	5.97	0.76	17.84	26.33
10	Tirupathi	7.76	3.92	0.21	11.89	28.52
11	Visakhapatnam	29.57	6.12	2.33	38.01	57.84
12	Warangal	20.46	6.94	0.47	27.87	43.66
Total		168.66	56.89	6.53	232.08	36.37

*Source: Andhra Pradesh forest inventory report-2010

FOREST COVER CHANGE MATRIX

(Area in Sq.Kms)

2008 (Data of Oct 2008 – Dec 2008)	2009 (Data of Oct 2009–Mar 2010)						Total of 2008
	VDF	MDF	OF	Scrub	NF	Water	
Very Dense Forest	950.14	0.00	0.00	0.00	0.00	0.00	950.14
Moderately Dense Forest	0.00	18628.78	1.62	6.49	14.83	0.00	18651.72
Open Forest	0.00	0.05	22574.14	17.88	53.69	0.00	22645.76
Scrub	0.00	0.08	1.14	13464.47	36.45	0.00	13502.14
Non-Forest	0.00	0.14	7.09	15.16	7391.07	0.00	7413.46
Water	0.00	0.00	0.00	0.00	0.00	651.33	651.33
Total of 2009	950.14	18629.05	22583.99	13504.00	7496.04	651.33	63814.55
Net Change	0.00	-22.67	-61.77	1.86	82.58		

*Source: APSFR-2011

FOREST COVER CHANGE MATRIX (GOOD AND DEGRADED FORESTS)

(Area in Sq.Kms)

2008 (Data of Oct 2008 – Dec 2008)	2009(Data of Oct 2009 – Mar 2010)			Total of 2008
	Good Forest	Degraded Forest	Water	
Good Forest	42154.73	92.89	0.00	42247.62
Degraded Forest	8.45	20907.15	0.00	20915.60
Water	0.00	0.00	651.33	651.33
Total of 2009	42163.18	21000.04	651.33	63814.55
Net Change	-84.44	84.44	0.00	

*Source: APSFR-2011

FOREST COVER CHANGE MATRIX (REJUVENATION AND BARREN)

(Area in Sq.Kms)

2008 (Data of Oct 2008 – Dec 2008)	2009(Data of Oct 2009 – Mar 2010)			Total of 2008
	Green	Barren	Water	
Green	55644.79	104.97	0.00	55749.76
Barren	22.39	7391.07	0.00	7413.46
Water	0.00	0.00	651.33	651.33
Total of 2009	55667.18	7496.04	651.33	63814.55
Net Change	-82.58	82.58	0.00	

*Source: APSFR-2011

ANDHRA PRADESH LAND USE PATTERN

Sl. No.	Land Use	Area in Sq.Kms	Parentage
1	Total Geographical Area	275068.00	100.00
2	Forest including Scrub	55664.31	20.23
3	Agriculture	168821.46	61.37
4	Land with Scrub	17137.66	6.23
5	Fallow Lands	10333.94	3.76
6	Green Lands	652.17	0.24
7	Settlements	2633.41	0.96
8	Vegetation Outside Forest	9132.87	3.32
9	Water Bodies	10343.00	3.76
10	Others	349.18	0.13

*Source: APSFR-2011

**STATEMENT SHOWING THE COMMODITY WISE MINOR FOREST
PROCUREMENTS DURING THE YEARS 2006-07 TO 2010-11**

Quantity in Quintals and Value in Lakh Rupees

Sl. No.	Name of the Commodity	2006-07		2007-08		2008-09		2009-10		2010-11	
		Qty	Value	Qty	Value	Qty	Value	Qty	Value	Qty	Value
1	Gum Karaya	6050.40	510.77	3715.97	313.55	2392.31	226.74	1965.32	213.23	1229.04	170.23
2	Gum Thiruman	4.33	0.23	14.04	0.75	5.47	0.29	2.79	0.16	7.43	0.39
3	Gum Olibanum	246.03	9.33	174.64	6.82	79.02	3.12	41.84	1.65	35.51	1.41
4	Gum Kondagogu	420.26	40.60	222.96	21.46	143.02	14.39	93.44	9.40	19.42	1.85
5	Gum Dikamali	17.25	0.21	29.02	0.35	0.00	0.00	0.00	0.00	0	0
6	Myrobalans	7862.31	21.98	4750.87	18.92	4361.64	23.81	8440.65	48.21	4977.59	28.19
7	Nuxvomica	8387.02	133.36	1103.31	17.01	4513.00	71.91	1668.11	27.46	1497.28	25.43
8	Seeded Tamarind	50113.40	440.63	37816.86	289.45	47783.29	382.22	22796.87	288.43	56.04	0.28
9	Deseeded Tamarind	3999.50	74.17	4897.05	76.20	3277.31	58.27	884.00	13.73	8819.30	95.82
10	Tamarind Seed	3270.23	12.62	4106.01	15.20	314.20	0.65	868.00	1.81	21361.57	395.43
11	Pungam Seed	745.18	5.99	2847.90	28.48	2190.22	22.98	982.40	10.79	804.02	7.72
12	Cleaning nuts	1320.74	12.47	232.17	2.09	189.22	1.70	235.98	2.15	66.11	0.61
13	Marking nuts	8352.23	41.70	7714.17	38.57	10072.76	50.37	2222.53	7.99	1112.14	3.73
14	Mohwa Seed	9441.87	104.49	3063.44	33.70	2437.75	28.85	3598.18	42.84	446.85	4.05
15	Mohwa Flower	15519.83	93.74	6183.32	43.28	5621.99	36.74	1835.95	11.02	1212.50	7.93
16	Honey	3523.28	281.53	3088.00	246.96	2731.89	217.11	1477.26	122.77	1552.32	174.85
17	Sheekakai	2957.72	29.62	1661.80	14.85	2124.61	17.00	1474.10	9.78	262.11	1.57
18	Soap nuts	2550.45	23.80	3769.32	40.27	468.53	4.48	544.73	7.16	738.26	13.35
19	Hill Brooms (Nos.)	390623	56.09	319092	46.06	56183	7.33	0	0	364450	150.56
20	Hill Brooms (Qtls.)	3.60	0.07	20.11	0.36	0.50	0.01	76669.00	18.60	0	0
21	Wild Brooms (Qtls.)	692.55	10.14	1137.74	17.38	457.32	7.89	478.24	8.41	60.58	1.93
22	Wild Brooms (Nos.)	0	0	50	0	0	0	0	0	0	0
23	Adda leaf	9140.67	46.70	6820.95	32.82	2819.93	13.30	1511.31	8.59	1134.73	8.51
24	Naramamidi Bark	1850.89	37.69	875.16	17.51	1655.24	34.74	930.00	23.25	1210.14	31.32
25	Mareduggedalu	762.76	25.57	1058.93	47.99	635.48	31.95	271.12	15.48	296.35	20.74
26	Others		63.16		25.99		34.89		0	0	17.26
27	Medicinal Herbs		0		0.66		11.52		0		0.00
	Total		2076.66		1396.68		1302.26		892.91		1163.16

*Source: GCC-Vishakapatnam

FOREST OUT TURN

Sl. No.	Year	Forest Department			
		Major Forest Produce		Minor Forest Produce	
		Timber (in Cmt.)	Fuel Wood (in Cmt.)	Bamboo (Nos)	Beedi Leaves (No. of SBs.)
1	2005-06	13465.34	39360.00	11517637	299200
2	2006-07	13557.00	19031.00	14212911	453000
3	2007-08	16484.13	11049.92	8657137	606300
4	2008-09	12253.49	57950.00	11084212	516000
5	2009-10	13251.89	7999.00	12882173	431100
6	2010-11	12302.55	15464.04	9375187	300200

*Source: PCCF Office Production & STC Sections

STATEMENT SHOWING THE BEEDI LEAVES COLLECTED TOGETHER WITH GROSS AND NET REVENUE REALISED AFTER NATIONALISATION OF TRADE IN BEEDI LEAVES

(Qty in S.B's & Value in Lakh Rupees)

Sl. No.	Financial Year & Beedi Leaf Season	Quantity of Leaf Collected in S.B.s	Gross Revenue	Expenditure	Net Revenue
1	2005-06(2005)	299200	2340.000	1932.200	407.800
2	2006-07(2006)	453000	3836.000	2981.600	854.400
3	2007-08 (2007)	606300	7347.000	4286.000	3061.000
4	2008-09(2008)	516000	5634.808	3801.075	1833.733
5	2009-10(2009)	431100	5476.781	3299.708	2177.073
6	2010-11(2010)	300200	4639.000	2583.000	2056.000

*Source: PCCF Office - S.T.C. Section.

Note:

One Standard Bag is of 1000 Bundles.

As a major welfare activity, the Government of Andhra Pradesh vide G.O. M.S. No 43 Dated 10-04-2006 of E.F.S.&T. (For III) Dept., have decided to distribute the net revenue to the Beedi leaf collectors every year, in proportion to the quantity of Beedi leaf collected by them as per wage cards.

STATEMENT SHOWING THE AMOUNT DISTRIBUTED AMONG THE BEEDI LEAF COLLECTORS

Season	Total Revenue Distributed (Net revenue) (Rs. in Crores)	Total No. of Beedi leaf Collectors benefited
2006-07	4.70	2,50,065
2007-08	30.61	2,60,100
2008-09	17.82	1,91,622
2009-10	20.76	1,51,551

*Source: PCCF Office - S.T.C. Section.

A) REVENUE ACHIEVED DURING THE YEARS 2006-07 TO 2010-11

(Rs. in lakhs)

Major Heads	2006-07	2007-08	2008-09	2009-10	2010-11
MH-101-Sale of Timber & Other Forest Produce					
(01) – Sale of Timber	2656.230	3146.108	2995.925	3612.397	3157.47
(02) – Sale of Bamboo	1042.628	1263.447	1409.138	1563.777	1423.95
(03) – Sale of Firewood & Charcoal	33.431	16.806	45.737	89.746	29.17
(04) – Sale of Other Forest Produce	2.775	53.954	16.037	13.218	55.92
(05) – Receipts form Beedi Leaf	35.253	40.350	38.326	25.674	13.77
(06) – Receipts from teak plants	1294.535	1084.978	1270.186	1787.923	1501.57
(07) – Receipts from Cashew plantations	58.101	44.858	29.074	25.337	13.54
(08) – Receipts from other plantations	147.167	139.663	122.762	55.708	67.07
(09) – Receipts from Red Sanders	1145.620	432.668	173.036	94.149	42.09
(10) – Receipts from thinning Operations	51.615	38.390	89.027	225.921	0.00
Total: 101:	6467.355	6261.222	6189.248	7493.850	6304.55
MH 800 – Other Receipts:					
(01) – Leave Salary Contribution	0.00	1.930	0.00	0.372	0.01
(02) – Fine and Forfeitures	30.832	21.033	48.482	38.478	23.10
(03) – Rents from Buildings	2.824	18.670	44.521	12.539	6.98
(04) – Compounding fee	947.882	1008.731	1509.697	2023.520	2105.47
(05)–Receipts from charitable Inst	0	0.044	0.730	0.425	0.00
(06) – Legal Charges collected from APFDC	0.233	0.000	0.000	0.000	0.00
(77) – User charges	256.513	87.310	134.710	101.215	114.24
(80) – Sale of Waste paper and Others	6.165	18.223	15.807	46.474	0.68
(81) – Other Receipts	426.588	596.794	775.918	620.622	4318.87
Total: 800:	1671.037	1752.735	2529.865	2843.645	6569.35
MH-111- Receipts from Zoo Parks					
(01) – Zoological Parks	0.024	0	0	0	0
Grand Total:	8138.416	8013.957	8719.113	10337.495	12873.90

*Source: PCCF Office - Budget Section

B) PLAN AND NON PLAN EXPENDITURE

(Rs.in lakhs)

Sl. No.	Details	2006-07	2007-08	2008-09	2009-10	2010-11
1	Plan	12941.762	13905.599	13093.180	5710.275	4391.808
2	Non –Plan	10122.727	10067.765	13257.374	20336.560	23336.120
Total:		23064.489	23973.364	26350.554	26046.835	27727.928

*Source: PCCF Office - Budget Section.

SOCIAL FORESTRY

PLANTING AND PUBLIC DISTRIBUTION OF SEEDLINGS – 2010-11

(Seedlings No. in Lakhs)

Sl.No	Name of the P&E Circle	Name of the Divisions	Forest Department			Other Agencies	Grand Total [5+6]
			Territorial Division	Social Forestry Division	Total		
1	2	3	4	5	6	7	8
1	Visakhapatnam	Visakhapatnam	14.107	18.150	32.257	694.370	726.627
		Vizianagaram	5.278	11.580	16.858	43.472	60.330
		Srikakulam	1.800	23.040	24.840	0.000	24.840
Sub-Total:			21.185	52.770	73.955	737.842	811.797
2	Vijayawada	Kakinada	6.305	18.550	24.855	389.500	414.355
		Eluru	5.040	29.750	34.790	61.830	96.620
		Vijayawada	2.844	7.050	9.894	159.383	169.277
Sub-Total:			14.189	55.350	69.539	610.713	680.252
3	Guntur	Guntur	3.401	5.000	8.401	21.763	30.164
		Nellore	1.800	10.060	11.860	8.021	19.881
		Prakasham	0.990	3.870	4.860	194.431	199.291
Sub-Total:			6.191	18.930	25.121	224.215	249.336
4	Ananthapur	Chitoor	8.751	27.500	36.251	21.500	57.751
		Ananthapur	2.462	12.700	15.162	23.520	38.682
Sub-Total:			11.213	40.200	51.413	45.020	96.433
5	Kadapa	Kurnool	1.017	14.450	15.467	6.970	22.437
		Kadapa	4.000	4.500	8.500	5.980	14.480
Sub-Total:			5.017	18.950	23.967	12.950	36.917
6	Warangal	Khammam	10.700	11.661	22.361	222.300	244.661
		Warangal	1.038	8.150	9.188	2.901	12.089
		Karimnagar	3.854	15.250	19.104	0.200	19.304
Sub-Total:			15.592	35.061	50.653	225.401	276.054
7	Hyderabad	Rangareddy	4.550	7.700	12.250	25.186	37.436
		Nalgonda	3.180	10.800	13.980	4.060	18.040
		Mahabubnagar	3.660	13.900	17.560	0.100	17.660
Sub-Total:			11.390	32.400	43.790	29.346	73.136
8	Nizamabad	Medak	4.606	16.130	20.736	7.999	28.735
		Nizamabad	3.328	18.000	21.328	0.000	21.328
		Adilabad	12.218	18.900	31.118	12.483	43.601
Sub-Total:			20.152	53.030	73.182	20.482	93.664
Total			104.929	306.691	411.620	1905.969	2317.589

*Source: PCCF Office Social Forestry.

**STATEMENT SHOWING THE DETAILS OF BLOCK PLANTATION & AVENUE PLANTATION FOR THE YEARS
2005-06 TO 2010-11 (UNDER SOCIAL FORESTRY)**

Name of the Division	Block Plantation (Hectares)						Avenue Plantation (Kms)					
	2005-06	2006-07	2007-08	2008-09	2009-10	2010-11	2005-06	2006-07	2007-08	2008-09	2009-10	2010-11
Ananthapur	137.250	0.000	1.000	1.000	10.000	4.000	45.500	28.000	12.000	12.000	0.000	33.000
Chittoor	21.000	10.000	0.000	30.000	0.000	1.000	39.500	32.000	11.000	33.190	0.000	0.000
Ananthapur Circle	158.250	10.000	1.000	31.000	10.000	5.000	85.000	60.000	23.000	45.190	0.000	33.000
Guntur	49.421	47.568	74.675	2.966	0.000	9.000	69.400	30.000	20.000	0.000	0.000	12.500
Prakasham	159.850	168.790	181.618	40.770	27.181	0.000	110.200	14.000	45.450	0.000	0.000	40.000
Nellore	0.000	0.000	0.000	9.859	0.000	0.000	357.400	10.000	25.000	4.380	0.000	25.000
Guntur Circle	209.271	216.358	256.293	53.595	27.181	9.000	537.000	54.000	90.450	4.380	0.000	77.500
Hyderabad	74.000	0.000	0.000	31.000	0.000	10.000	14.000	0.000	0.000	20.500	0.000	18.000
Mahabubnagar	316.000	0.000	62.000	66.500	0.000	28.000	25.000	10.000	50.000	106.000	28.000	74.000
Nalgonda	31.000	0.000	0.000	1.740	0.000	0.000	2.380	1.000	0.000	5.100	0.000	74.000
Hyderabad Circle	421.000	0.000	62.000	99.240	0.000	38.000	41.380	11.000	50.000	131.600	28.000	166.000
Kadapa	63.000	10.000	54.000	0.000	0.000	0.000	62.500	30.000	36.500	8.850	0.000	12.500
Kurnool	61.500	75.000	1.000	0.000	0.000	0.000	40.000	40.000	15.500	10.000	0.000	75.000
Kadapa Circle	124.500	85.000	55.000	0.000	0.000	0.000	102.500	70.000	52.000	18.850	0.000	87.500
Nizamabad	34.500	0.000	15.000	1.800	0.000	0.000	13.500	0.000	30.000	19.000	0.000	27.000
Adilabad	100.000	56.000	19.000	0.000	0.000	10.000	97.000	15.000	40.000	18.800	0.000	40.000
Sangareddy	50.000	0.000	10.000	15.800	0.000	43.000	139.500	20.000	20.000	14.000	0.000	68.000
Nizamabad Circle	184.500	56.000	44.000	17.600	0.000	53.000	250.000	35.000	90.000	51.800	0.000	135.000
Krishna	0.000	15.000	10.500	0.000	21.000	216.000	13.000	32.600	45.000	0.000	8.500	35.000
West Godavari	0.000	12.000	10.000	0.000	21.960	200.000	30.000	55.000	50.000	8.000	0.000	51.000
East Godavari	0.000	0.000	0.000	0.000	6.700	0.000	100.000	60.000	62.500	16.000	2.000	119.000
Vijayawada Circle	0.000	27.000	20.500	0.000	49.660	416.000	143.000	147.600	157.500	24.000	10.500	205.000
Visakhapatnam	12.500	25.470	2.830	90.000	0.000	20.000	84.500	21.000	2.000	13.000	3.000	25.500
Vijayanagaram	74.250	12.500	51.250	5.000	0.000	5.000	40.000	3.000	10.000	15.200	0.000	19.000
Srikakulam	170.500	54.360	0.000	8.650	0.000	0.000	117.900	36.000	27.250	32.000	0.000	36.000
Vizag Circle	257.250	92.330	54.080	103.650	0.000	25.000	242.400	60.000	39.250	60.200	3.000	80.500
Warangal	72.500	45.000	40.000	35.420	0.000	17.000	44.000	10.000	25.000	32.000	0.000	7.500
Karimnagar	28.400	7.610	7.430	10.000	0.000	8.000	70.000	20.000	46.500	0.000	0.000	25.000
Khammam	0.000	19.000	47.800	5.570	0.000	48.000	134.000	16.000	70.000	53.870	0.000	70.000
Warangal Circle	100.900	71.610	95.230	50.990	0.000	73.000	248.000	46.000	141.500	85.870	0.000	102.500
State Total	1455.671	558.298	588.103	356.075	86.841	619.000	1649.280	483.600	643.700	421.890	41.500	887.000

*Source: PCCF Office Social Forestry.

STATEMENT SHOWING THE DISTRICT WISE PLANTATIONS RAISED UNDER VARIOUS SCHEMES (APCFM/FDA/RIDF/SF/FCA/TGP/RVP/CAMPA) FROM 2005-06 TO 2010-11

Sl. No	District	Physical Achievements (in ha.)						Grand Total
		2005-06	2006-07	2007-08	2008-09	2009-10	2010-11	
1	2	3	4	5	6	7	8	9
1	Adilabad	17245.08	4611.87	3203.64	1039.80	2443.00	891.90	29435.29
2	Ananthapur	1515.75	205.85	484.00	675.00	694.50	873.95	4449.05
3	Chittoor	4270.79	4269.84	1538.25	1439.19	1376.00	740.16	13634.23
4	East Godavari	1942.94	3590.35	1199.82	181.00	707.70	985.19	8607.00
5	Guntur	578.40	1211.57	868.04	594.97	592.00	99.68	3944.66
6	Kadapa	2426.10	4901.74	768.81	911.68	726.50	363.52	10098.35
7	Karimnagar	2087.25	740.41	404.74	216.00	355.80	139.30	3943.50
8	Khammam	4583.70	3919.83	1966.64	3338.44	2605.00	2415.57	18829.18
9	Krishna	692.00	964.60	438.50	145.00	318.50	329.08	2887.68
10	Kurnool	1103.50	1216.14	867.50	1045.00	1665.50	265.36	6163.00
11	Mahabubnagar	2556.34	3634.59	1454.96	338.50	907.00	323.36	9214.75
12	Medak	3532.53	2161.99	742.65	1338.80	917.00	145.74	8838.71
13	Nalgonda	1086.38	1182.00	381.00	467.34	373.00	347.45	3837.17
14	Nellore	4520.95	5687.62	3260.03	2306.24	1757.00	328.82	17860.66
15	Nizamabad	3882.28	3194.20	463.65	896.80	985.50	169.00	9591.43
16	Prakasham	1636.74	1871.79	1536.07	1050.77	1429.18	160.98	7685.53
17	Rangareddy	1035.00	889.55	383.00	348.00	529.00	164.36	3348.91
18	Srikakulam	1906.28	1176.65	823.25	40.65	0.00	90.50	4037.33
19	Visakhapatnam	4549.00	5915.00	3470.43	3483.00	2663.00	3641.53	23721.96
20	Vizianagaram	2254.63	956.00	459.15	147.78	367.00	164.20	4348.76
21	Warangal	2549.17	1431.88	811.40	394.42	190.92	190.00	5567.79
22	West Godavari	773.00	342.50	381.75	878.03	1183.04	449.81	4008.13
Grand Total		66727.81	54075.97	25907.28	21276.41	22786.14	13279.46	204053.07

*Source: PCCF Office Social Forestry

STATEMENT SHOWING THE LATEST SCHEME WISE PLANTATIONS RAISED FROM 2005-06 TO 2010-11

Sl. No.	Schemes	Physical Achievements (in ha.)						Grand Total
		2005-06	2006-07	2007-08	2008-09	2009-10	2010-11	
1	2	3	4	5	6	7	8	9
1	APCFM	41418.17	25562.63	9050.46	0.00	0.00	0.00	76031.26
2	FDA	13078.00	14489.00	5104.00	8928.00	13588.50	3777.50	58965.00
3	RIDF	6865.00	6717.55	5220.00	6998.00	6277.00	2301.00	34378.55
4	Social Forestry	3105.45	1041.90	1231.80	777.97	128.34	1506.00	7791.46
5	TGP	1203.00	1787.00	1393.50	1050.00	235.00	53.60	5722.10
6	FCA	322.19	292.89	655.67	342.44	106.30	2033.46	3752.95
7	RVP	736.00	4185.00	3251.85	3180.00	2451.00	3357.90	17161.75
8	CAMPA	0.00	0.00	0.00	0.00	0.00	250.00	250.00
Grand Total		66727.81	54075.97	25907.28	21276.41	22786.14	13279.46	204053.07

*Source: PCCF Office Social Forestry

FDAs Activities upto 2010-11

Sl. No.	Particulars	2002-03	2003-04	2004-05	2005-06	2006-07	2007-08	2008-09	2009-10	2010-11	Total
1	No. of FDAs formed	13	10	5	3	0	6	10	-	-	47
2	Physical targets (in Ha.)	-	9600.00	10065.00	12410.00	14025.00	3739.00	6710.00	7393.00	3265.00	67207.00
3	Physical Achievements (in Ha.)	-	6312.00	9231.00	11924.00	10010.00	3357.00	9074.00	11001.00	3178.00	64087.00
4	Finance Releases (in Lakhs)	839.50	1044.00	1421.43	737.00	1030.14	1036.70	1154.00	1159.97	1573.58	9996.32
5	Finance Expenditure (in Lakhs)	115.406	894.287	1182.323	1060.061	1199.451	761.882	1258.568	1577.042	1163.38	9212.40
6	No. of VSS formed	700	698	-	138	-	203	593	-	-	2332

*Source: PCCF Office – FDA

VANA SAMRAKSHNA SAMITHIES (VSS)

District Wise Number of VSS formed, Area Covered and No. of Beneficiaries

Sl. No	Name of the District	No of V.S.S	No of Beneficiaries			Area Covered in Ha.
			Male	Female	Total	
1	Adilabad	1124	68800	60791	129591	125687.57
2	Ananthapur	281	3703	2469	6172	62835.04
3	Chittoor	491	33115	27225	60340	113763.41
4	East Godavari	529	26656	33172	59828	114805.82
5	Guntur	180	7283	2820	10103	26080.34
6	Kadapa	370	18328	13464	31792	113939.11
7	Karimnagar	363	109856	89849	199705	95594.70
8	Khammam	507	48832	40997	89829	116663.46
9	Krishna	59	7774	580	8354	8136.34
10	Kurnool	247	38349	17777	56126	69477.13
11	Mahaboobnagar	279	44912	55608	100520	72236.85
12	Medak	251	31292	49387	80679	67804.17
13	Nalgonda	174	12702	33110	45812	38996.71
14	Nellore	292	17439	12927	30366	64593.06
15	Nizamabad	260	46794	136407	183201	73104.43
16	Prakasham	203	5138	12716	17854	63422.88
17	Rangareddy	123	35974	46791	82765	35349.86
18	Srikakulam	282	13082	12084	25166	29020.30
19	Visakhapatnam	908	51504	39885	91389	78289.21
20	Vizianagaram	265	7348	6520	13868	31492.38
21	West Godavari	213	13638	37733	51371	41454.14
22	Warangal	317	21918	50649	72567	77251.89
Total		7718	664437	782961	1447398	1519998.80

* Source: P.C.C.F. Office- P.M.U-2

I. WILD LIFE SANCTUARIES

Sl. No.	Name of the Wildlife Sanctuary	Area in Sq.Kms	Districts
1.	Kawal Wildlife Sanctuary	893.00	Adilabad
2.	Pranahita Wildlife Sanctuary	136.02	Adilabad
3.	Siwaram Wildlife Sanctuary	29.81	Adilabad & Karimnagar
4.	Eturunagaram Wildlife Sanctuary	803.00	Warangal
5.	Pakhal Wildlife Sanctuary	860.20	Warangal
6.	Kinnerasani Wildlife Sanctuary	635.40	Khammam
7.	Coringa Wildlife Sanctuary	235.70	East Godavari
8.	Kolleru Wildlife Sanctuary	308.55	West Godavari & Krishna
9.	Krishna Wildlife Sanctuary	194.81	Krishna & Guntur
10.	Pocharam Wildlife Sanctuary	129.84	Medak & Nizamabad
11.	Manjeera Wildlife Sanctuary	20.00	Medak
12.	Rajiv Gandhi Wildlife Sanctuary	3568.00	Guntur, Kurnool, Mahabubnagar, Prakasham & Nalgonda
13.	Rollapadu Wildlife Sanctuary	6.14	Kurnool
14.	Gundla Brahmeswara Wildlife Sanctuary	1194.00	Kurnool & Prakasham
15.	Sri Lanka Malleswaram Wildlife Sanctuary	464.42	Kadapa
16.	Nelapattu Wildlife Sanctuary	4.58	Nellore
17.	Pulicat Wildlife Sanctuary	500.00	Nellore
18.	Koundinya Wildlife Sanctuary	357.60	Chittoor
19.	Sri Venkateswara Wildlife Sanctuary	525.97	Chittoor & Kadapa
20.	Kombala konda Wildlife Sanctuary	70.70	Visakhapatnam
21.	Penusila Narasimha Wildlife Sanctuary	1030.85	Kadapa & Nellore

*Source: PCCF Office-WL-Section

II. NATIONAL PARKS

Sl. No.	Name of the National Park	Area in Sq.Kms	Districts
1	Kasu Brahmananda Reddy National Park	1.425	Hyderabad
2	Sri Venkateswara National Park (Part of Sri Venkateshwara Wildlife Sanctuaries)	353.63	Chittoor
3	Mrugavani National Park	3.60	Ranga Reddy
4	Mahavir Harina Vanasthali National Park,	14.59	
5	Rajiv Gandhi National Park	2.30	Kadapa
6	Papikonda National Park	1012.85	Khammam & East & West Godavari.

III. DEER PARKS

Sl. No	Name of the Deer Park	Area in Ha.	Districts
1	Chittoor Deer Park	3.25	Chittoor
2	Kinnerasani Deeer Park	14.50	Khammam (Paloncha)
3	Pillalamarri Deer Park	5.80	Mahaboobnagar
4	Kandaleru Deer Park	25.00	Nellore
5	TTD Deer Park	7.42	Tirupati
6	Jawaharlal Nehru Tourist Complex, (JLTC), Shamirpet	30.00	Ranga Reddy

IV. ZOOLOGICAL PARKS

Sl. No.	Name of the Zoo Park	Area in Ha.	Year of Establishment
1	Nehru Zoological Park, Hyderabad	160.00	1959
2	Indira Gandhi Zoological Park, Visakhapatnam	625.00	1977
3	Sri Venkateswara Zoological Park, Tirupati	2212.00	1987
4	Vana Vignan Kendhram (Mini Zoo), Warangal	19.20	2009

*Source: PCCF Office-WL-Section

V. WILD ANIMAL RESCUE CENTERS

Sl. No.	Name of the Rescue Center	Area in Ha.	District
1	Jannaram	20.00	Adilabad
2	Sundhipenta	0.50	Kurnool
3	Pocharam	4.00	Medak
4	ARC for Tigers & Lions at IGZP sponsored by CZA	20.00	Visakhapatnam
5	ARC for Tigers & Lions at SVZP sponsored by ZA	20.00	Chittoor

*Source: PCCF Office-WL-Section

CAMPA

(Compensatory Afforestation Fund Management and Planning Authority)

In pursuance of the Hon'ble Supreme Court's orders dated: 30.10.2002 in IA No.566 in W.P. (Civil) No. 202 of 1995, the Government of India, Ministry of Environment & Forests, has constituted an authority to be known as Compensatory Afforestation Fund Management and Planning Authority (CAMPA), and State CAMPA's is each state for Afforestation of Compensatory lands and conservation, protection, regeneration and management of existing natural forests and wildlife, including environmental services, research, training and capacity building.

Achievements of 2010-11:

In 2010 an amount of Rs.120.74 crores (2010-11) were released to AP State CAMPA by Ministry of Environment & Forests (MoEF), Govt. of India.

180 nos. base camps, 77 Strike forces, 154 check posts are established and maintained to assist the forest officials for protection of valuable forests in AP.

An area of 2277 Ha. of degraded open and blank forest areas were planted with forest species. Further, advance operations are being carried out in 4325 Ha. of area for planting during the year 2011 season with forest species.

Rs.23.45 lakhs paid as compensation to the people affected in wildlife cases.

Rs. 65.12 lakhs spent for wildlife habitat improvement and protection of wildlife.

The front line staff were provided with communication facilities and vehicles for mobility to improve forest protection.

An amount of Rs.10.869 crores is incurred as expenditure during 2009-10 and amount of Rs.82.877 crores is incurred as expenditure during 2010-11.

**STATEMENT SHOWING THE EXPENDITURE INCURRED UNDER CAMPA FOR CA
& NPV FOR THE YEAR 2009-10 & 2010-11**

(Rs. in Lakhs)

Sl. No.	Name of the Circle / Others	Expenditure Incurred under CAMPA during 2009-10			Expenditure Incurred under CAMPA during 2010-11		
		CA	NPV	Total	CA	NPV	Total
1	2	3	4	5	6	7	8
1	Adilabad	90.583	107.888	198.471	62.753	659.195	721.948
2	Ananthapur	25.007	16.791	41.798	127.676	324.928	452.604
3	Guntur	3.450	17.801	21.251	34.967	449.753	484.720
4	Hyderabad	7.965	172.739	180.704	40.289	2163.293	2203.582
5	Khammam	193.704	41.209	234.913	312.992	384.229	697.220
6	Kurnool	9.978	25.194	35.172	55.942	438.202	494.144
7	Nizamabad	2.696	30.648	33.344	20.106	300.229	320.335
8	Rajahmundry	0.000	16.376	16.376	70.085	420.461	490.546
9	Visakhapatnam	3.039	23.214	26.253	26.891	358.855	385.746
10	Warangal	1.000	44.726	45.726	1.066	264.718	265.784
11	WLM Tirupathi	7.377	70.653	78.030	64.999	398.563	463.561
12	FDPT Srisailam	13.813	17.431	31.244	115.479	338.851	454.330
13	APFDA Dulapalli	0.000	36.508	36.508	0.000	155.178	155.178
14	R&D Circle, Hyderabad	0.000	36.171	36.171	0.000	262.885	262.885
15	WLM Hyderabad	0.000	49.564	49.564	0.000	103.524	103.524
16	AO	0.000	21.440	21.440	0.000	88.091	88.091
17	Director Zoological Parks Hyderabad	0.000	0.000	0.000	0.000	77.362	77.362
18	WLM Eluru	0.000	0.000	0.000	0.000	67.151	67.151
19	Social Security Fund with PCCFs Office	0.000	0.000	0.000	0.000	99.000	99.000
Grand Total		358.612	728.353	1086.965	933.245	7354.468	8287.711

*Source: Prl.CCF Office CAMPA Section.

**ANDHRA PRADESH FOREST ACADEMY
DULAPALLY, HYDERABAD.**

The State Institute of Forestry Training (SIFT) was established in 1987 to cater the training needs of Forestry. It is renamed as AP Forest Academy in 2001.

The vision is to develop Andhra Pradesh Forest Academy into a premier institute not only in Andhra Pradesh but also in the country. It should be equipped with modern technologies and expertise for imparting effective training in participatory Forestry and Natural resource: Management to in-service officials, NGOs and Others.

In addition to the training, the Andhra Pradesh Forest Academy is also engaged in extension and publicity activities. The following periodical publications are published.

Monthly News Letter (Vanasamrakshini), APFA News Letter (Quarterly), Vana Gnapika (souvenir of FSO Training), Posters (4), Documentary Films (6), Training Manuals/Books (8), Children and Forest Education (CAFÉ), Vana Chaitanyam (Kalajathas) in 3 divisions (40 Villages) etc.

**STATEMENT SHOWING THE TRAININGS CONDUCTED AT A.P. FOREST ACADEMY,
DULAPALLY FROM 1-04-2006 TO 31-03-2011 AND NO. OF PARTICIPANTS ATTENDED.**

Sl. No	Category		2006-07	2007-08	2008-09	2009-10	2010-11 (All Categories)
1.	No of Trainings		119	110	92	96	71
2.	V.S.S.						9
	C.P.s	Male	269	227	112	78	
		Female	20	0	2	0	
	Members	Male	287	217	85	18	
Female		50	1	0	0		
3.	NGOs / CEWs	Male	282	265	90	41	30
		Female	39	6	0	0	
4.	Officers & Executive Staff	C.F.s	43	16	37	36	86
		D.F.O.s	30	21	37	66	52
		D.C.F.s	1	0	2	3	16
		A.C.F.s	76	30	8	48	113
		F.R.O.s	141	82	109	41	150
		D.R.O.s	92	58	43	83	95
		F.S.O.s	322	322	275	230	579
		F.B.O.s	541	488	558	481	585
		A.B.O.s	145	112	203	213	262
5.	Ministerial Staff	Mgr/AO	0	0	6	0	0
		Suptds.	1	1	41	7	0
		TO/TAs	31	16	64	34	0
		Sr.Assts.	71	63	48	38	10
		Jr.Assts.	204	138	94	34	19
		Typists/ Steno	95	62	41	12	42
6.	Others		174	315	34	66	48
Total:			2914	2440	1889	1529	2096

*Source: APFDC Dulapally

FOREST RESEARCH

There are eighteen Research Centers under the control of four Research Divisions located at Hyderabad, Warangal, Tirupathi and Rajahmundry which attend to the Forestry problems in their respective jurisdictions. The Research and Development Circle which was created in 1971-72 with Head Quarters at Hyderabad and presently headed by APCCF rank Officer to ensure effective co-ordination of various research activities taken up in the research centers to document the research findings and disseminate the information for practical application in the field.

Details are given below:

Sl. No.	Name of the Research Center	Name of the Research Division	Total Area in Ha	Activities being taken up
1	Regional Forest Research Centre, Mulugu, Medak Dist.	State Silviculturist, Hyderabad	132.00	Experimental plots, improved Nursery Technology, Seed Collection centre. Vermicompost/Organic Compost Production unit
2	Field Research Station, Dulapally, RR Dist		37.00	Experimental plots, improved Nursery Technology, Medicinal Plants Seed centre. Vermicompost/Organic Compost Production unit
3	Regional Forest Research Centre, Diwanacheruvu Rajahmundry	State Silviculturist, Rajahmundry	125.00	Experimental plots, improved Nursery Technology, Seed Collection Centre, Vermicompost/Organic Compost Production unit
4	Field Research Station, Bathulavarigudem near Eluru		15.00	Experimental plots
5	Field Research Station, Kambalakonda, Visakhapatnam		5.00	Improved Nursery Technology
6	Field Research Station, Vakalapudi		5.00	Casurina Breeding Programme
7	Diwanacheruvu, Rajahmundry		102.00	Experimental plots
8	Sri Srinivasa Vanam Field Research Station (SVFRS), Kukkaladoddi, Kadapa, Dist.	State Silviculturist, Tirupati	145.00	Experimental plots, improved Nursery Technology, Vermicompost/Organic Compost Production unit
9	SKVFRS, Mangapuram		50.00	Experimental plots, improved Nursery Technology, Vermicompost/Organic Compost Production unit
10	Bio-Technology Research Centre, Tirupati		100.00	Experimental plots, improved Nursery Technology, Seed Collection Centre, Tissue Culture, Bio-Fertilizers and Bio-Pesticides production unit
11	Field Research Station, Nellore		100.00	Medicinal Plant Garden and Medicinal Plant Tree Species plots
12	Field Research Station, Sri Kalahasthi		61.00	Medicinal Plant Tree Species Plots and other Research Plots
13	Field Research Station, Achutapuram, Khammam Dist.	Forest Geneticist, Warangal	105.00	Experimental plots, improved Nursery Technology, Vermi compost/Organic compost production unit
14	Field Research Station, Jakaram, Warangal Dist.		60.00	Experimental plots, improved Nursery Technology, Vermi compost/Organic compost production unit
15	Field Research Station, Kesamudram, Warangal Dist.		25.00	Experimental plots, improved Nursery Technology, Vermi compost/Organic compost production unit
16	Field Research Station, Mahadevpur, Karimnagar Dist.		35.00	Experimental plots, improved Nursery Technology
17	Field Research Station, Warangal		2.00	Improved Nursery Technology, Seed Collection Centre, Vermi compost/Organic compost production unit
18	Field Research Station, Allipally near Achutapuram of Khammam Dist.		101.35	Experimental plots, improved Nursery Technology

*Source: Prl.CCF Office R&D Circle

**EXPENDITURE INCURRED UNDER VARIOUS SCHEMES DURING THE YEAR 2010-11
IN R&D CIRCLE**

(Rs, In Lakhs)

Sl. No.	Division	Budget released	Expenditure Incurred
1	AP State CAMPA	269.222	263.190
2	Tree and Pasture Seed Development	3.000	1.941
3	Silviculture Research	8.710	8.873
4	Publicity	20.000	14.367
5	13 th Finance Commission	50.000	39.034

*Source: Prl.CCF Office R&D Circle

**DISTRICT WISE POSITION OF CLAIMS RECEIVED AND TITLE CERTIFICATES ISSUED
UNDER RoFR as on 30-09-2011**

Sl.No.	Name of the District	Total Claims received		Claims approved		Certificates Distributed	
		No. of Claims	Extent (Acres)	No. of Claims	Extent (Acres)	No. of Claims	Extent (Acres)
1	2	3	4	5	6	7	8
1	Srikakulam	18510	49657	14839	46252	14839	46252
2	Vizianagaram	15546	95165	13050	74798	13050	74798
3	Visakhapatnam	53045	219166	32873	180282	28905	168439
4	East Godavari	14879	245746	7859	238845	7859	238845
5	West Godavari	5779	63690	1319	54334	1319	54334
6	Khammam	68470	392495	32105	210386	32105	210386
7	Warangal	33997	204491	14150	159437	14150	159437
8	Adilabad	57094	496420	36824	402793	35385	396657
9	Mahabubnagar	1281	4798	933	2216	933	2216
10	Kurnool	2373	24088	720	17184	720	17184
11	Krishna	4099	8129	911	1519	904	1498
12	Guntur	14300	23000	2470	4842	2470	4842
13	Prakasham	4950	16041	3432	8763	1976	7777
14	Nellore	569	726	365	271	365	271
15	Chittoor	835	32044	152	27980	152	27980
16	YSR Kadapa	154	394	67	121	67	121
17	Ananthapur	2776	6753	393	703	393	703
18	Nalagonda	9440	19977	4510	9637	4510	9637
19	Medak	3421	20264	2319	17506	2319	17506
20	Karimnagar	5016	11105	1746	2943	1720	2906
21	Nizamabad	11454	27399	2941	8222	2941	8222
22	Rangareddy	2491	5110	715	1212	715	1212
	TOTAL:	330479	1966658	174693	1470246	167797	1451223

*Source: Prl.CCF Office TW-Section

CIRCLE-WISE BAMBOO AREA IN ANDHRA PRADESH

Area in Ha.

Circle	Pure Bamboo	Dense Bamboo	Medium Bamboo	Scattered Bamboo	Total Bamboo	Bamboo Area Percentage
Adilabad	39740	36759	30798	43714	151011	21.3
Ananthapur	2021	0	2021	5052	9094	2.3
Guntur	5377	6145	8450	7682	27654	4.3
Hyderabad	0	0	0	0	0	0.0
Khammam	39435	74174	49673	23473	186755	23.5
Kurnool	29715	32262	22923	14433	99333	17.9
Nizamabad	0	0	0	0	0	0.0
Rajahmundry	13260	29172	45967	47735	136134	29.3
Srisailam	39273	15526	10046	31053	95898	16.0
Tirupathi	11803	10117	5058	7587	34565	8.3
Visakhapatnam	74698	35931	62406	52005	225040	34.2
Warangal	19339	11376	11376	21615	63706	10.0
Total	274661	251462	248718	254349	1029190	16.1

*Source: Andhra Pradesh forest inventory report

62nd VANAMAHOTSAVA 2011

The 62nd Vanamahotsava 2011 was celebrated on 09-07-2011. The slogan for this year Vanamahotsava was “Two Million Trees Plantation in a single day”. At Hyderabad the programme was launched by Hon’ble Chief Minister of Andhra Pradesh Sri N. Kiran Kumar Reddy, at Madepalli Village in Ranga Reddy District. The Hon’ble Minister for Forests, Hon’ble Home Minister for Andhra Pradesh and other dignitaries attended the tree planting programme.

Vanamahostava celebrations were simultaneously conducted at all the District Head Quarters, through out the state, on 09th July 2011. The participants in the Vanamahostava Programme included the elected people representatives, VSS members, NGOs, School and College Students, Government Officials and General Public. The Forest Department had made elaborate arrangement for taking-up planting of Two Million Trees on a single day. As against the target of planting 20 lakhs saplings on the day, total 21.54 lakhs saplings were planted in 555 locations through out the State.

The Forest Department had raised 21 Crores of seedlings for taking up planting during this rainy season. The Social Forestry wing of the department is supplying seedlings at nominal cost to various organizations and the General Public, for taking up planting. The nurseries of the department are established through out the state, covering all the mandals in the state. Apart from the Forest Department, other Government organizations such as ITDA, DWMA, Horticulture, TD, SCCL, APFDC, MA & UD and Other agencies, like Paper Mills have also raised about 20 Crore of seedlings for taking up planting programme in their areas during this rainy season.

**THE ACTIVITIES OF ANDHRA PRADESH FOREST DEVELOPMENT
CORPORATION LTD., HYDERABAD**

Physical achievements upto 31st March 2011:

Sl.No	Species	Area in Ha.
1	Eucalyptus (Seed Origin)	18492.31
2	Eucalyptus (Clonal)	36404.54
3	Bamboo	12357.24
4	Cashew	10654.51
5	Coffee	4010.00
6	Teak	844.32
7	Medicinal Plants	524.80
8	Casuarina, Pines and other Miscellaneous species	381.33
Total		83669.05

Raising of plantation in the last (6) years:

Sl. No	Species	Area Planted in Ha					
		2005-06	2006-07	2007-08	2008-09	2009-10	2010-11
1	Eucalyptus	1509.38	2918.91	4913.0	5965.35	5805.97	3167.30
2	Bamboo	301.14	0	110.00	432.63	514.45	459.04
3	Cashew – Gap Planting	0	0	100.00	101.55	65.00	98.00
4	Coffee – Enrichment Planting	50.40	48.00	73.00	149.00	101.00	0
5	Others	0	202.00	0	0	0	0
Total		1860.92	3168.91	5196.00	6648.53	6486.42	3724.34

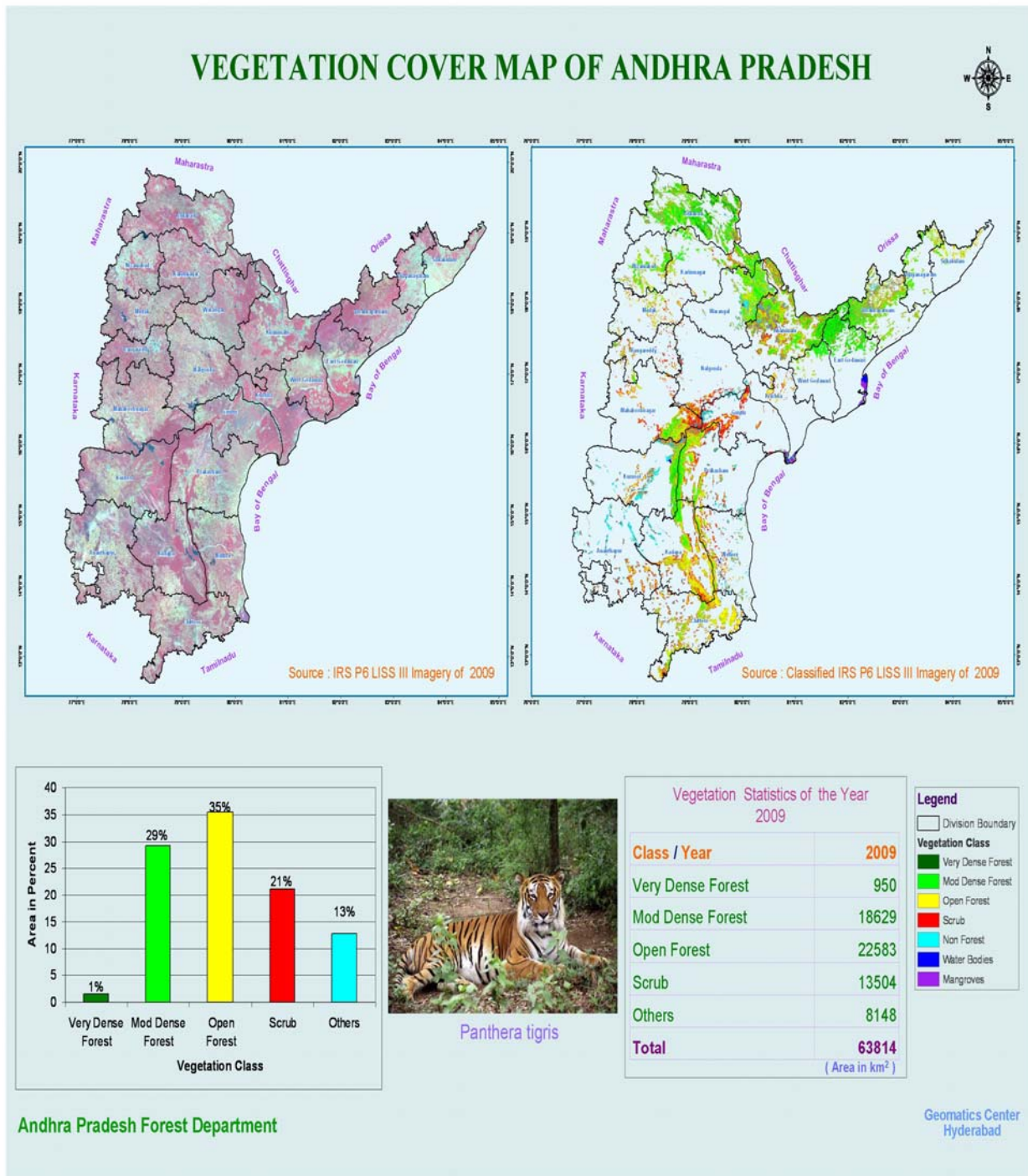
Productivity of various plantations in the last (6) years:

Sl. No	Species	2005-06	2006-07	2007-08	2008-09	2009-10	2010-11
1	Eucalyptus-Pulpwood (MT)	98544	180000	110000	65000	85000	185000
2	Bamboo-industrial cuts (MT)	6714	8182	5000	3000	4000	5500
3	Bamboo- Long Bamboo (Nos)	1430256	1596000	2350000	2675000	2950000	3250000
4	Cashew (MT)	951.42	428.90	380.00	400.00	430.00	300.00
5	Coffee (MT)	438.76	916.00	689.00	1054.00	667.00	901.00
6	Pepper (MT)	56.00	67.94	54.76	13.25	123.79	30.00

*Source: APFDC, Hyderabad.

GEOMATICS OF ANDHRA PRADESH

There is a well established Geomatic Centre in Forest Department. Keeping in tune with recent technologies the Geomatic Centre of Forest Department utilized the recent innovations of Remote Sensing, Geographical Information System (G.I.S.), Global Positioning System (G.P.S.) for its Planning, Management and Monitoring of forest resources.



**RESULTS OF ANDHRA PRADESH FOREST INVENTORY
DIAMETER CLASS-WISE VOLUMES OF TOP 15 SPECIES IN ANDHRA PRADESH.**

Sl. No.	Species Name	In million cubic meters							
		10-20	20-30	30-40	40-50	50-60	60-70	above 70	Total
1.	Anogeisus latifolia	5.67	5.95	3.65	1.59	0.02	0.30	0.95	18.48
2.	Xylia xylocarpa	3.21	4.76	3.43	1.89	0.07	0.31	0.11	14.50
3.	Terminalia tomentosa	2.17	4.12	3.70	1.79	0.02	0.54	0.82	13.76
4.	Lanea coromandelica	1.80	3.96	3.72	1.65	0.07	0.21	0.40	12.49
5.	Tectona grandis	4.67	3.52	2.60	1.09	0.06	0.05	0.26	12.44
6.	Madhuca indica	0.60	1.50	2.44	2.09	0.09	1.00	1.65	10.48
7.	Dalbergia paniculata	1.37	1.82	2.47	1.98	0.09	0.48	0.32	9.37
8.	Hardwickia binata	1.07	1.90	2.02	1.47	0.10	0.75	0.89	9.07
9.	Pterocarpus marsupium	1.44	1.52	1.88	1.32	0.05	0.31	0.16	7.22
10.	Boswellia serrata	0.30	1.08	2.37	1.89	0.10	0.19	0.26	6.86
11.	Mangifera indica	0.07	0.13	0.19	0.47	0.02	0.61	3.71	5.70
12.	Cleistanthus collinus	1.91	1.85	0.87	0.23	0.08	0.02	0.08	5.04
13.	Diospyros melanoxylon	1.07	1.35	1.14	0.72	0.04	0.13	0.36	4.98
14.	Lagerstroemia parviflora	1.28	1.50	1.22	0.52	0.07	0.07	0.08	4.85
15.	Tamarindus indica	0.06	0.17	0.39	0.45	0.11	0.28	1.44	3.27

*Source: Andhra Pradesh Forest Inventory Report – 2010.

**DIVERSION OF FOREST AREA AND PROGRESS OF COMPENSATORY AFFORESTATION UNDER FOREST CONSERVATION
ACT - 1980 OF ANDHRA PRADESH AS ON 31-03-2011**

Sl. No	Name of the Circle	Forest area diverted in Ha.	C.A. Stipulation in Ha.			Addl C.A., Penal C.A. & Safety Zone	Financial amount required to be deposited by user agency (Rs in La.)	Implementation of stipulation				Amount spent till the end of reporting quarter (Rs in Lakhs)	Balance area to be afforested in Ha.		
			In Forest Land	In Non Forest Land	Total (4+5)			Fund made available by user agency (Rs in La.)	Area afforested in Ha.				On Forest Land	On Non-Forest land	Total (14+15)
									On Forest Land	On Non-Forest land	Total (10+11)				
1	2	3	4	5	6	7	8	9	10	11	12	13	14	15	16
1	T. G. Project	10371.400	0.000	10400.000	10400.000	0.000	2904.370	2822.100	0.000	10400.000	10400.000	2914.780	0.000	0.000	0.000
2	Adilabad	5853.998	273.472	853.540	1127.012	1195.275	1165.309	1171.534	1330.447	762.200	2092.647	856.313	139.000	155.050	294.050
3	Ananthapur	556.419	67.282	1083.636	1150.918	392.420	1288.600	1288.600	176.451	504.596	681.047	290.839	283.277	581.450	864.727
4	Guntur	1209.255	1576.444	1838.158	3414.602	81.918	1307.685	1304.645	1753.152	862.549	2615.701	579.395	1.710	978.369	980.079
5	Hyderabad	808.450	42.000	1742.597	1784.597	18.576	796.652	796.652	58.818	1176.379	1235.197	497.189	1.798	566.863	568.661
6	Khammam	9575.343	1292.260	2216.148	3508.408	381.951	1904.845	1892.845	1536.491	689.408	2225.899	974.378	899.500	632.960	1532.460
7	Kurnool	1866.573	739.020	1516.064	2255.084	48.190	1608.315	1608.315	762.340	1032.345	1794.685	600.215	24.870	433.720	458.590
8	Nizamabad	353.412	72.775	62.810	135.585	22.900	271.585	271.441	52.470	33.150	85.620	17.000	60.551	17.660	78.211
9	Rajahmundry	2095.300	411.087	3484.024	3895.111	540.290	2563.419	2563.419	883.237	541.324	1424.561	294.661	68.380	2945.810	3014.190
10	Visakhapatnam	272.445	52.927	1321.540	1374.467	0.500	2614.040	2614.040	35.540	25.000	60.540	73.424	0.030	1296.540	1296.570
11	Warangal	2069.822	316.815	578.710	895.525	172.036	156.723	102.610	46.000	475.325	521.325	92.603	236.900	308.600	545.500
12	FDPT Srisailam	840.470	7.760	1024.305	1032.065	0.000	771.872	733.212	7.760	776.740	784.500	299.307	0.000	249.855	249.855
13	WLM-Tirupathi	408.789	262.278	725.198	987.476	139.321	781.862	782.962	320.085	331.340	651.425	158.931	76.675	398.858	475.533
14	WLM-Hyderabad	128.530	0.000	0.000	0.000	0.000	0.000	0.000	0.000	0.000	0.000	0.000	0.000	0.000	0.000
Grand Total		36410.206	5114.120	26846.730	31960.850	2993.377	18135.277	17952.375	6962.791	17610.356	24573.147	7649.035	1792.691	8565.735	10358.426

*Source: PCCF Office – FM Section